

TB-Series

TB-Series

CIRCUIT BREAKER

The TB-Series is a space-saving, tandem pole circuit breaker specifically designed to fit a two pole breaker into one rack unit making it ideal for datacom and PDU applications.

The TB-Series is designed with a common trip linkage ensuring if one pole trips, the tandem pole simultaneously trips. It also features a trip-free mechanism, a safety feature making it impossible to manually hold the contacts closed during overcurrent or fault conditions. The TB-Series is available with an optional handle guard to prevent inadvertent actuation and an optional auxiliary switch.

2 poles; ratings from 0.10 to 20 amps, up to 120/240VAC; UL 489 Listed, TUV, IEC/EN 60947-2.



Resources:

[Watch Product Video](#)



Product Highlights:

- Fits in 1RU
- 2 Pole Protection in a 1 Pole Package
- Common Trip Included
- Optional Auxiliary Switch

Typical Applications:

- Datacom
- Power Distribution Units



Carling Technologies®

Innovative Designs. Powerful Solutions.

Carling Technologies, Inc.
60 Johnson Avenue, Plainville, CT 06062
Email: sales@carlingtech.com
Application Support: team2@carlingtech.com
Phone: 860.793.9281 Fax: 860.793.9231

www.carlingtech.com

Electrical Tables

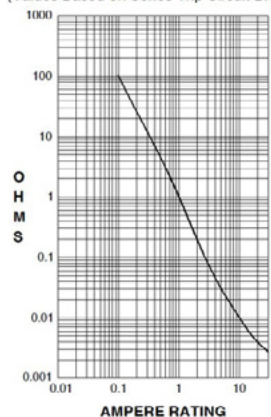
Table A: Voltage and Current Rating

TB SERIES TABLE A : UL489 LISTED, cUL and TUV CERTIFIED CIRCUIT BREAKERS						
Circuit Configuration	Voltage			Current Rating	Interrupting Capacity (Amps)	
	Max Rating	Frequency	Phase	Full Load Amps	UL / cUL	TUV
Series	120/240	50 / 60	1	0.10 - 20	10,000	5,000

Electrical

Maximum Voltage	120/240VAC 50/60 Hz
Current Ratings	Standard current coils: 0.200, 0.350, 0.500, 0.750, 1.00, 2.50, 5.00, 7.50, 10.0, 15.0, 20.0 Amps. Other ratings available - consult ordering scheme.
Auxiliary/Alarm Switch Rating(s)	10.1A 250VAC 0.1A 80VDC
Dielectric Strength	Meets UL and CSA Requirements and can withstand 1500 VAC, 60Hz for one minute between all electrically isolated terminals. Breakers to hold 100%, and must trip at 125% of rated current and greater within the time limit shown on Table B. Data shown represents breaker response at ambient temperature of 77° F (25° C) with no preloading. Breakers are mounted vertically in standard wall-mount position.
Insulation Resistance	Minimum of 100 Megohms @ 500VDC
Overload	50 operations @ 600% rated current
Inrush Pulse Tolerance	Standard delays 12x rated current, high inrush delays 25x for 1/2 cycle @ 60 Hz
Resistance / Impedance	(Across circuit breaker terminals)

RESISTANCE, IMPEDANCE VALUES from Line to Load Terminals (Values Based on Series Trip Circuit Breaker)



CURRENT (AMPS)	TOLERANCE (%)
0.10 - 5.0	± 15
5.1 - 20.0	± 25

Agency Approvals

UL Listed (489) as Molded Case Circuit Breakers
 TUV Certified 60947-2
 CUL Certified CAN/CSA 22.2 No. 5
 IEC/EN 60947-2

*Manufacturer reserves the right to change product specification without prior notice.

Mechanical

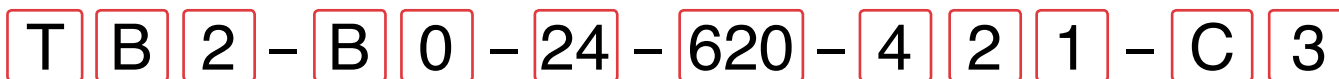
Endurance	6,000 ON-OFF operations @ 6 per minute; with rated Current and Voltage. 4,000 ON-OFF operations with no load.
Trip Free	All B-Series Circuit Breakers will trip on overload, even when Handle is forcibly held in the ON position.
Trip Indication	The operating Actuator moves positively to the OFF position when an overload causes the breaker to trip.

Physical

Internal Circuit Configurations	Series, with or without auxiliary vswitch
Weight	Approx. 170g / 5.75 oz per unit
Standard Colors	Housing – Black Actuator – White or Black with contrasting ON-OFF legends
Mounting	Refer to the dimensional specifications page

Environmental

Designed and tested in accordance with requirements of specification MIL-PRF-55629 & MIL-STD-202 as follows:	
Shock	Withstands 100G's, 6ms sawtooth while carrying rated current per Method 213, Test Condition "I". Instantaneous and ultra short curves tested @ 90% rated current.
Vibration	Withstands 0.060" excursion from 10-55Hz, and 10G's 55-500Hz, at rated current per Method 204C, Test Condition A. Instantaneous and ultrashort curves tested @ 90% of rated current.
Moisture Resistance/ Humidity	Method 106D, i.e. ten 24-hour cycles @ +25°C to +65°C, 80-98% RH
Salt Spray	Method 101, Condition A (90-95% RH@ 5% NaCl Solution, 96 hours)
Thermal Shock	Method 107D, Condition A (Five cycles @ -55°C to +25°C to +85°C to 25°C)
Operating Temperature	-20° C to +85° C
Storage Temperature	-40° C to +85° C



1 Type 2 Series 3 Poles 4 Circuit 5 Auxiliary Switch 6 Frequency & Delay 7 Current Rating 8 Terminal 9 Actuator Color 10 Mounting/Barriers 11 Application Rating 12 Agency Approval

1 TYPE
T Tandem Breaker

2 SERIES
B B-Series Circuit Breaker

3 POLES
2 Two

4 CIRCUIT
B Series Trip (Current)

5 AUXILIARY SWITCH ²
0 without Aux Switch
1 S.P.D.T., 0.093 Q.C. Term.
2 S.P.D.T., 0.110 Q.C. Term.
3 S.P.D.T., 0.110 Solder Lug
8 S.P.S.T., 0.187 Q.C. Term.
9 S.P.D.T., 0.187 Q.C. Term.

6 FREQUENCY & TIME DELAY
21 50/60Hz Ultra Short
22 50/60Hz Short
24 50/60Hz Medium
26 50/60Hz Long
42 50/60Hz Short, Hi-Inrush
44 50/60Hz Medium, Hi-Inrush
46 50/60Hz Long, Hi-Inrush

7 CURRENT RATING (AMPERES)

CODE	AMPERES				
210	0.10	280	0.80	440	4.00
215	0.15	285	0.85	445	4.50
220	0.20	290	0.90	450	5.00
225	0.25	295	0.95	455	5.50
230	0.30	410	1.00	460	6.00
235	0.35	512	1.25	465	6.50
240	0.40	415	1.50	470	7.00
245	0.45	517	1.75	475	7.50
250	0.50	420	2.00	480	8.00
255	0.55	522	2.25	485	8.50
260	0.60	425	2.50	490	9.00
265	0.65	527	2.75	495	9.50
270	0.70	430	3.00	610	10.00
275	0.75	435	3.50	710	10.50

8 TERMINAL ¹
J Screw M5 Back Connect
K Screw 10-32 Back Connect
N Screw M4 Back Connect
Y Screw 8-32 Back Connect

9 ACTUATOR COLOR

Actuator Color	ON-OFF	Dual	Legend Color
White	B	1	Black
Black	D	2	White
Red	G	3	White
Green	J	4	White
Blue	L	5	White
Yellow	N	6	Black
Gray	Q	7	Black
Orange	S	8	Black

10 MOUNTING

	HORIZONTAL MOUNTING STYLE	BARRIER
1	6-32 x .195 inches Threaded Inserts	Offset
3	6-32 x .195 inches Threaded Inserts	Standard
A	6-32 x .195 inches Threaded Inserts with Actuator Guard	Offset
C	6-32 x .195 inches Threaded Inserts with Actuator Guard	Standard
2	ISO M3 x 5 mm Threaded Inserts	Offset
4	ISO M3 x 5 mm Threaded Inserts	Standard
B	ISO M3 x 5 mm Threaded Inserts with Actuator Guard	Offset
D	ISO M3 x 5 mm Threaded Inserts with Actuator Guard	Standard

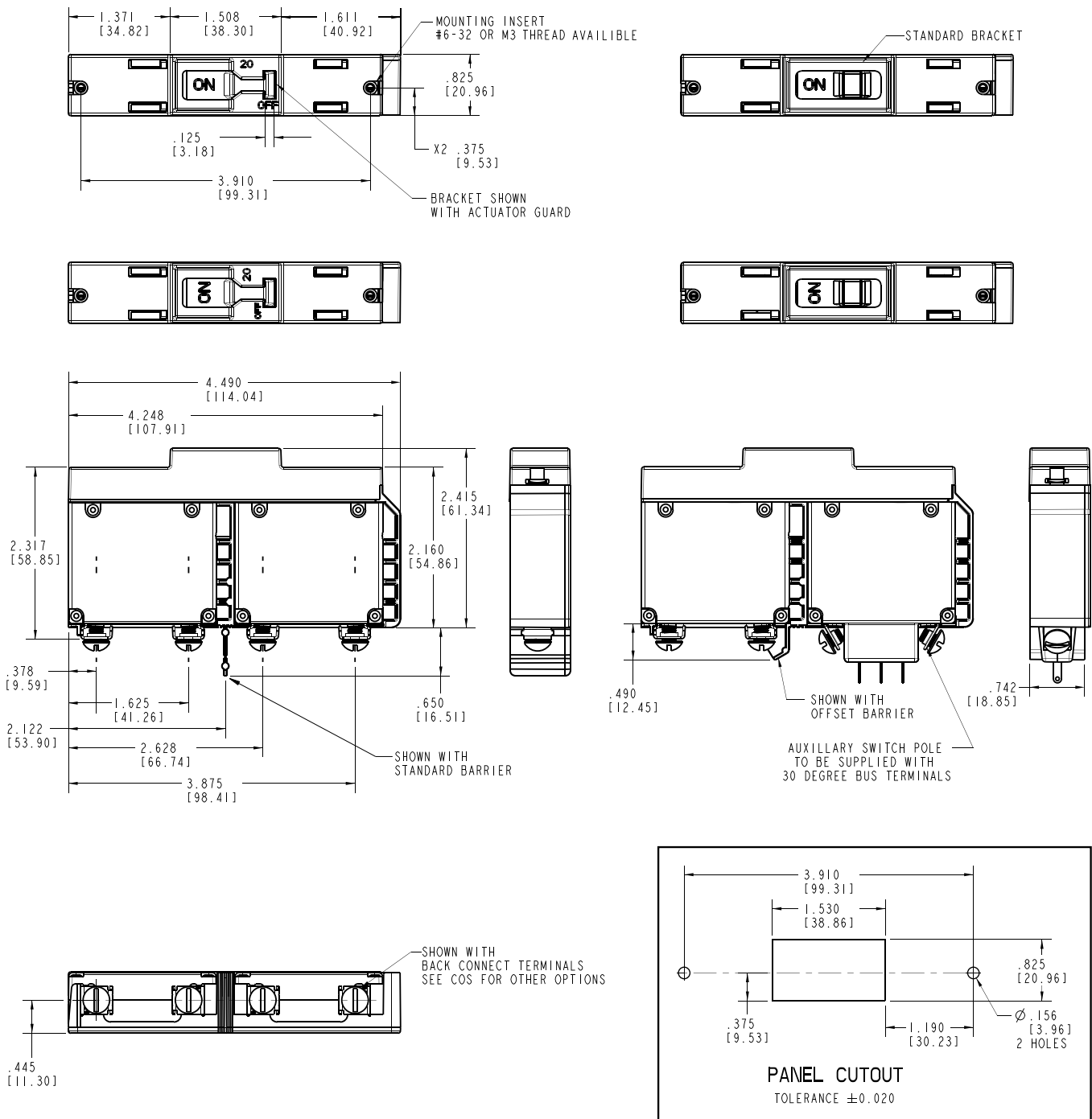
	VERTICAL MOUNTING STYLE	BARRIER
5	6-32 x .195 inches Threaded Inserts	Offset
8	6-32 x .195 inches Threaded Inserts	Standard
E	6-32 x .195 inches Threaded Inserts with Actuator Guard	Offset
G	6-32 x .195 inches Threaded Inserts with Actuator Guard	Standard
6	ISO M3 x 5 mm Threaded Inserts	Offset
8	ISO M3 x 5 mm Threaded Inserts	Standard
F	ISO M3 x 5 mm Threaded Inserts with Actuator Guard	Offset
H	ISO M3 x 5 mm Threaded Inserts with Actuator Guard	Standard

11 APPLICATION RATING
C 120/240 VAC

12 AGENCY APPROVAL
A Without Approvals
G UL489 Listed
3³ UL489 Listed, cUL Certified, TUV Certified

Notes:
 1 Pole with auxiliary switch to be supplied with 30 degree bus terminals.
 2 Supplied with one auxiliary switch. See Dimensional Specification drawings for location.
 3 TUV certification only available with I/O ON/OFF markings (Actuator code: 1,2,3,4,5,6,7,8)

Dimensional Specifications: in. [mm]



- Notes:
 1 All dimensions are in inches [millimeters].
 2 Tolerance ± 0.020 [.51] unless otherwise specified.

Authorized Sales Representatives and Distributors

Click on a region of the map below to find your local representatives and distributors or visit www.carlingtech.com/findarep.



About Carling

Founded in 1920, Carling Technologies is a leading manufacturer of electrical and electronic switches and assemblies, circuit breakers, electronic controls, power distribution units, and multiplexed power distribution systems. With four ISO registered manufacturing facilities and technical sales offices worldwide, Carling Technologies Sales, Service and Engineering teams do much more than manufacture electrical components, they engineer powerful solutions! To learn more about Carling please visit www.carlingtech.com/company-profile.

To view all of Carling's environmental, quality, health & safety certifications please visit www.carlingtech.com/environmental-certifications

Worldwide Headquarters

Carling Technologies, Inc.
60 Johnson Avenue, Plainville, CT 06062
Phone: 860.793.9281 **Fax:** 860.793.9231
Email: sales@carlingtech.com

Northern Region Sales Office: nrsm@carlingtech.com
Southeast Region Sales Office: sersm@carlingtech.com
Midwest Region Sales Office: mrrsm@carlingtech.com
West Region Sales Office: wrsm@carlingtech.com
Latin America Sales Office: larsm@carlingtech.com

Asia-Pacific Headquarters

Carling Technologies, Asia-Pacific Ltd.,
Suite 1607, 16/F Tower 2, The Gateway,
Harbour City, 25 Canton Road,
Tsimshatsui, Kowloon, Hong Kong
Phone: Int + 852-2737-2277 **Fax:** Int + 852-2736-9332
Email: sales@carlingtech.com.hk

Shenzhen, China: shenzhen@carlingtech.com
Shanghai, China: shanghai@carlingtech.com
Pune, India: india@carlingtech.com
Kaohsiung, Taiwan: taiwan@carlingtech.com
Yokohama, Japan: japan@carlingtech.com

Europe | Middle East | Africa Headquarters

Carling Technologies LTD
4 Airport Business Park, Exeter Airport,
Clyst Honiton, Exeter, Devon, EX5 2UL, UK
Phone: Int + 44 1392.364422 **Fax:** Int + 44 1392.364477
Email: ltd.sales@carlingtech.com

Germany: gmbh@carlingtech.com
France: sas@carlingtech.com



Carling Technologies®

Innovative Designs. Powerful Solutions.